



AERIAL MAP
N15



VICINITY MAP
1" = 1,000'

GENERAL NOTES

1. THE SITE IS ZONED IN ACCORDANCE WITH S-2 ZONING REQUIREMENTS OF THE CITY OF NICHOLAS BLVD ZONING ORDINANCE.
2. BLAKEMAN ASSUMES BUT DOES NOT GUARANTEE THAT REQUIRED STORMWATER QUANTITY AND QUALITY REQUIREMENTS WILL BE ACHIEVED WITH THE REDUCED IMPERVIOUS AREA, USE OF DIGEST STORMWATER DETENTION OR MANUFACTURED STORMWATER BAPS, AND THAT ADEQUATE STORMWATER INFRASTRUCTURE IS AVAILABLE WITHIN THE PUBLIC RIGHT-OF-WAY.
3. A CONDITIONAL ZONING IS REQUIRED FOR COMMERCIAL STORE WITH FUEL SALES.

SITE INFORMATION

ADDRESS: 4100 SHORE DR.
NICHOLAS BLVD, VIRGINIA 23405

OWNER: 1479672140000

EXISTING ZONING: S-2

PROPOSED ZONING: S-2

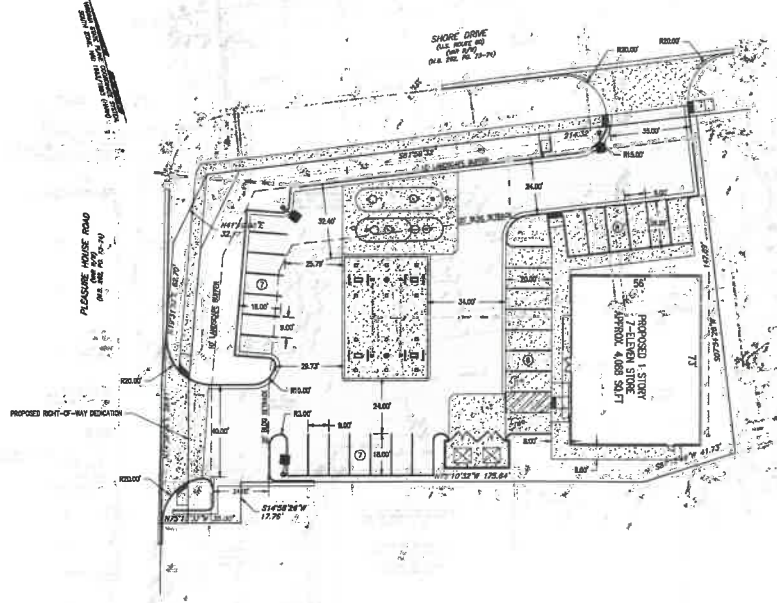
TOTAL LOT AREA: 35,241 ± SQ FT OR 0.714 AC.

OWNER: 800 SHORE DR.
1130 WOODBRIDGE BLVD, SUITE 200
NICHOLAS BLVD, VA 23455

CONSULTANT: BLAKEMAN CORPORATION
800 N MICHIGAN RD
NICHOLAS BLVD, VIRGINIA 23453

PARKING REQUIREMENTS: REQUIRED = 21 (1 PER 200 SQ FT)
PROPOSED = 25

ADJACENT ZONING	BUILDING SETBACKS	LANDSCAPE BUFFER
NORTH: S-2, SHORE DR.	FRONT: 35 FT	FRONT: 10 FT
SOUTH: S-2	REAR: 25 FT	REAR: 0 FT
EAST: S-2	SIDE/REAR: 30 FT	SIDE/REAR: 10 FT
WEST: S-2, PLEASURE HOUSE RD.	SIDE: 0 FT	SIDE: 0 FT



BLAKEMAN CORPORATION
1479672140000
800 N MICHIGAN RD. SUITE 200, NICHOLAS BLVD, VIRGINIA 23455
TEL: 757.533.1111
WWW.BLAKEMANCORP.COM

PROJECT: SHORE DR. AND PLEASURE HOUSE RD
SHEET: CUP CONCEPT PLAN
DATE: 11/17/2011

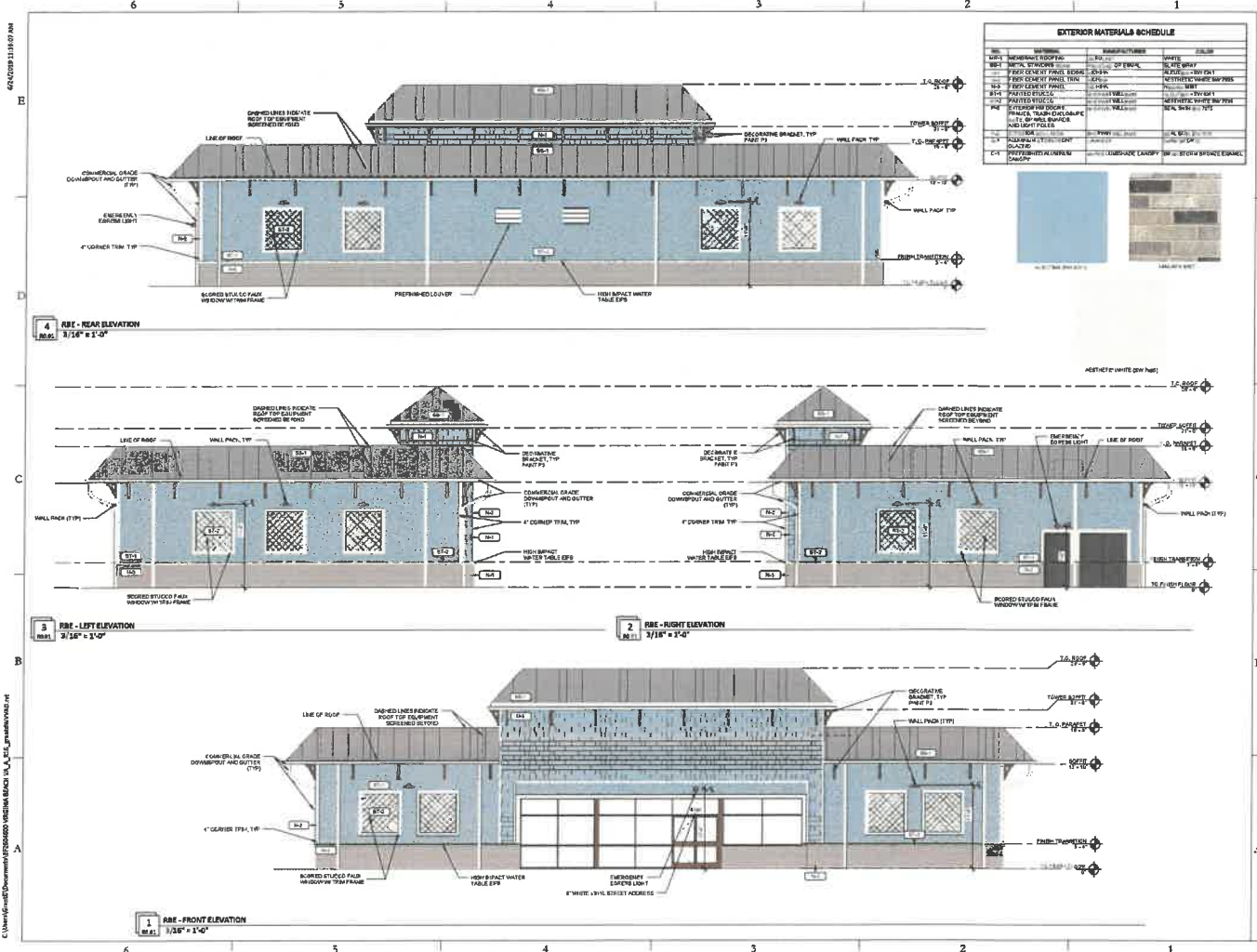
SCALE: 1" = 100'

DATE: 11/17/2011

REVISIONS:

NO.	DATE	DESCRIPTION
1	11/17/2011	ISSUED FOR CITY COMMENTS

FILE NAME: C:\Users\jgordon\Documents\Projects\2011\11-17-11\11-17-11\CUP\11-17-11\CUP CONCEPT PLAN.dwg



EXTERIOR MATERIALS SCHEDULE

NO.	DESCRIPTION	FINISH	COLOR
M-1	WARRANTY ROOFING	ASPH/FLT	BLACK
M-2	PAINT, TRIMWORK	FLAT	TRIM WHITE
F-1	PAINT COLOR OF PAINT FINISH - EXTERIOR	FLAT	TRIM WHITE
F-2	PAINT COLOR OF PAINT FINISH - INTERIOR	FLAT	TRIM WHITE
B-1	PAINTED BRICK	FLAT	TRIM WHITE
B-2	PAINTED BRICK	FLAT	TRIM WHITE
B-3	PAINTED BRICK	FLAT	TRIM WHITE
B-4	PAINTED BRICK	FLAT	TRIM WHITE
B-5	PAINTED BRICK	FLAT	TRIM WHITE
B-6	PAINTED BRICK	FLAT	TRIM WHITE
B-7	PAINTED BRICK	FLAT	TRIM WHITE
B-8	PAINTED BRICK	FLAT	TRIM WHITE
B-9	PAINTED BRICK	FLAT	TRIM WHITE
B-10	PAINTED BRICK	FLAT	TRIM WHITE
B-11	PAINTED BRICK	FLAT	TRIM WHITE
B-12	PAINTED BRICK	FLAT	TRIM WHITE
B-13	PAINTED BRICK	FLAT	TRIM WHITE
B-14	PAINTED BRICK	FLAT	TRIM WHITE
B-15	PAINTED BRICK	FLAT	TRIM WHITE
B-16	PAINTED BRICK	FLAT	TRIM WHITE
B-17	PAINTED BRICK	FLAT	TRIM WHITE
B-18	PAINTED BRICK	FLAT	TRIM WHITE
B-19	PAINTED BRICK	FLAT	TRIM WHITE
B-20	PAINTED BRICK	FLAT	TRIM WHITE
B-21	PAINTED BRICK	FLAT	TRIM WHITE
B-22	PAINTED BRICK	FLAT	TRIM WHITE
B-23	PAINTED BRICK	FLAT	TRIM WHITE
B-24	PAINTED BRICK	FLAT	TRIM WHITE
B-25	PAINTED BRICK	FLAT	TRIM WHITE
B-26	PAINTED BRICK	FLAT	TRIM WHITE
B-27	PAINTED BRICK	FLAT	TRIM WHITE
B-28	PAINTED BRICK	FLAT	TRIM WHITE
B-29	PAINTED BRICK	FLAT	TRIM WHITE
B-30	PAINTED BRICK	FLAT	TRIM WHITE
B-31	PAINTED BRICK	FLAT	TRIM WHITE
B-32	PAINTED BRICK	FLAT	TRIM WHITE
B-33	PAINTED BRICK	FLAT	TRIM WHITE
B-34	PAINTED BRICK	FLAT	TRIM WHITE
B-35	PAINTED BRICK	FLAT	TRIM WHITE
B-36	PAINTED BRICK	FLAT	TRIM WHITE
B-37	PAINTED BRICK	FLAT	TRIM WHITE
B-38	PAINTED BRICK	FLAT	TRIM WHITE
B-39	PAINTED BRICK	FLAT	TRIM WHITE
B-40	PAINTED BRICK	FLAT	TRIM WHITE
B-41	PAINTED BRICK	FLAT	TRIM WHITE
B-42	PAINTED BRICK	FLAT	TRIM WHITE
B-43	PAINTED BRICK	FLAT	TRIM WHITE
B-44	PAINTED BRICK	FLAT	TRIM WHITE
B-45	PAINTED BRICK	FLAT	TRIM WHITE
B-46	PAINTED BRICK	FLAT	TRIM WHITE
B-47	PAINTED BRICK	FLAT	TRIM WHITE
B-48	PAINTED BRICK	FLAT	TRIM WHITE
B-49	PAINTED BRICK	FLAT	TRIM WHITE
B-50	PAINTED BRICK	FLAT	TRIM WHITE
B-51	PAINTED BRICK	FLAT	TRIM WHITE
B-52	PAINTED BRICK	FLAT	TRIM WHITE
B-53	PAINTED BRICK	FLAT	TRIM WHITE
B-54	PAINTED BRICK	FLAT	TRIM WHITE
B-55	PAINTED BRICK	FLAT	TRIM WHITE
B-56	PAINTED BRICK	FLAT	TRIM WHITE
B-57	PAINTED BRICK	FLAT	TRIM WHITE
B-58	PAINTED BRICK	FLAT	TRIM WHITE
B-59	PAINTED BRICK	FLAT	TRIM WHITE
B-60	PAINTED BRICK	FLAT	TRIM WHITE
B-61	PAINTED BRICK	FLAT	TRIM WHITE
B-62	PAINTED BRICK	FLAT	TRIM WHITE
B-63	PAINTED BRICK	FLAT	TRIM WHITE
B-64	PAINTED BRICK	FLAT	TRIM WHITE
B-65	PAINTED BRICK	FLAT	TRIM WHITE
B-66	PAINTED BRICK	FLAT	TRIM WHITE
B-67	PAINTED BRICK	FLAT	TRIM WHITE
B-68	PAINTED BRICK	FLAT	TRIM WHITE
B-69	PAINTED BRICK	FLAT	TRIM WHITE
B-70	PAINTED BRICK	FLAT	TRIM WHITE
B-71	PAINTED BRICK	FLAT	TRIM WHITE
B-72	PAINTED BRICK	FLAT	TRIM WHITE
B-73	PAINTED BRICK	FLAT	TRIM WHITE
B-74	PAINTED BRICK	FLAT	TRIM WHITE
B-75	PAINTED BRICK	FLAT	TRIM WHITE
B-76	PAINTED BRICK	FLAT	TRIM WHITE
B-77	PAINTED BRICK	FLAT	TRIM WHITE
B-78	PAINTED BRICK	FLAT	TRIM WHITE
B-79	PAINTED BRICK	FLAT	TRIM WHITE
B-80	PAINTED BRICK	FLAT	TRIM WHITE
B-81	PAINTED BRICK	FLAT	TRIM WHITE
B-82	PAINTED BRICK	FLAT	TRIM WHITE
B-83	PAINTED BRICK	FLAT	TRIM WHITE
B-84	PAINTED BRICK	FLAT	TRIM WHITE
B-85	PAINTED BRICK	FLAT	TRIM WHITE
B-86	PAINTED BRICK	FLAT	TRIM WHITE
B-87	PAINTED BRICK	FLAT	TRIM WHITE
B-88	PAINTED BRICK	FLAT	TRIM WHITE
B-89	PAINTED BRICK	FLAT	TRIM WHITE
B-90	PAINTED BRICK	FLAT	TRIM WHITE
B-91	PAINTED BRICK	FLAT	TRIM WHITE
B-92	PAINTED BRICK	FLAT	TRIM WHITE
B-93	PAINTED BRICK	FLAT	TRIM WHITE
B-94	PAINTED BRICK	FLAT	TRIM WHITE
B-95	PAINTED BRICK	FLAT	TRIM WHITE
B-96	PAINTED BRICK	FLAT	TRIM WHITE
B-97	PAINTED BRICK	FLAT	TRIM WHITE
B-98	PAINTED BRICK	FLAT	TRIM WHITE
B-99	PAINTED BRICK	FLAT	TRIM WHITE
B-100	PAINTED BRICK	FLAT	TRIM WHITE

FORUM
THE ART & SCIENCE OF BUILDING

7 ELEVATOR STORE
4769 SHOREDRIVE
VIRGINIA BEACH, VA 23465
VERDAD REAL ESTATE CONSTRUCTION SERVICES
1200 BROADWAY, SUITE 1000
DURHAM, NC 27601

NOT FOR CONSTRUCTION

Architect Name: RYAN M. FAUST
Architect Number: A-000780

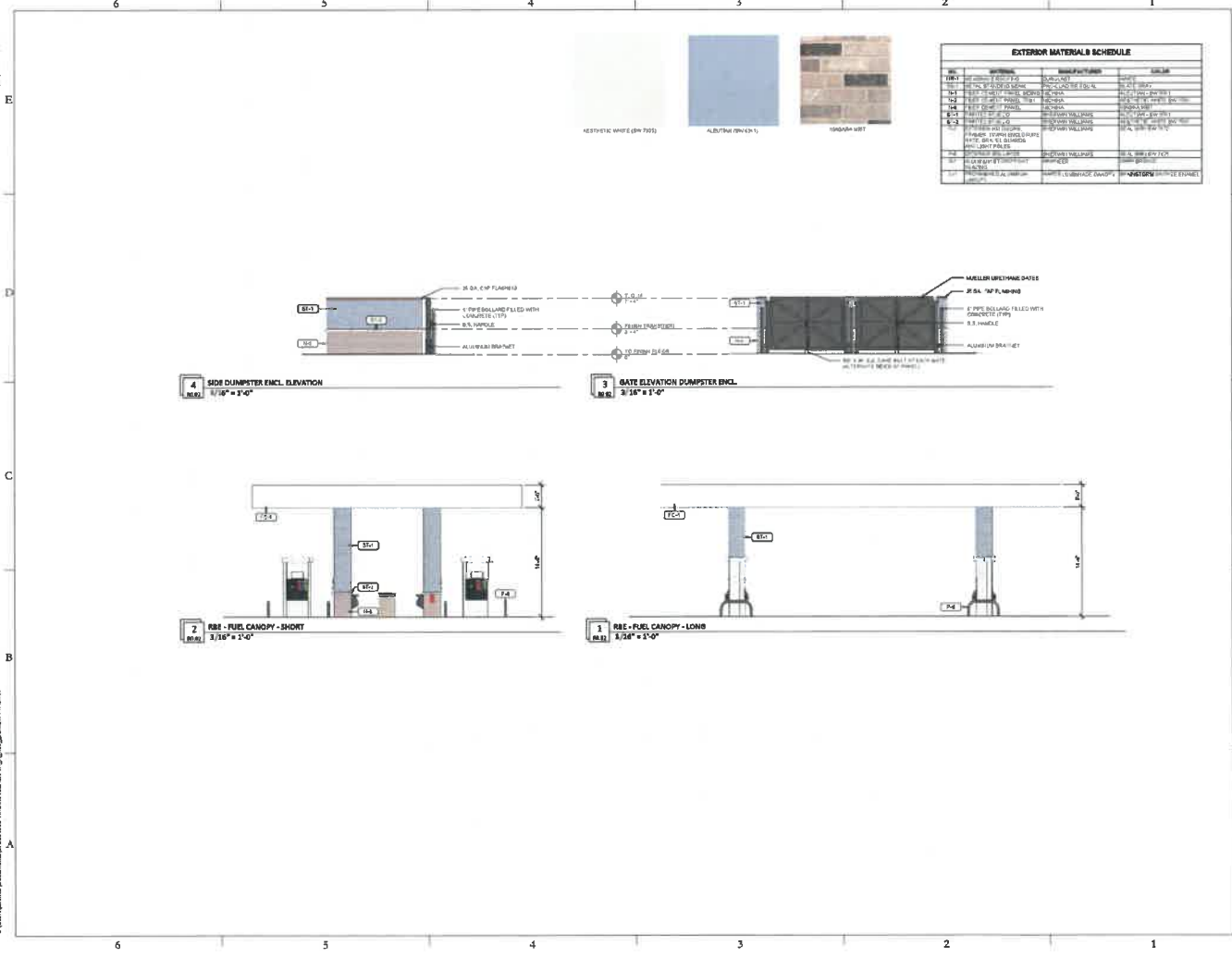
REVISIONS

PROJECT NUMBER: 072604600
RELEASE DATE: 06/17/2018

REVIEW BOARD ELEVATIONS

R.0.1

C:\Users\Gardner\Documents\7450000\7450000-VIRGINIA BEACH VA_Arch\7450000.rvt



EXTERIOR MATERIALS SCHEDULE			
NO.	DESCRIPTION	MANUFACTURER	FINISH
101	TRAVERTINE	TRAVERTINE	TRAVERTINE
102	ALUMINUM	ALUMINUM	ALUMINUM
103	AESTHETIC WHITE	AESTHETIC WHITE	AESTHETIC WHITE
104	1/2" X 3/4" X 1/2"	1/2" X 3/4" X 1/2"	1/2" X 3/4" X 1/2"
105	1/2" X 3/4" X 1/2"	1/2" X 3/4" X 1/2"	1/2" X 3/4" X 1/2"
106	1/2" X 3/4" X 1/2"	1/2" X 3/4" X 1/2"	1/2" X 3/4" X 1/2"
107	1/2" X 3/4" X 1/2"	1/2" X 3/4" X 1/2"	1/2" X 3/4" X 1/2"
108	1/2" X 3/4" X 1/2"	1/2" X 3/4" X 1/2"	1/2" X 3/4" X 1/2"
109	1/2" X 3/4" X 1/2"	1/2" X 3/4" X 1/2"	1/2" X 3/4" X 1/2"
110	1/2" X 3/4" X 1/2"	1/2" X 3/4" X 1/2"	1/2" X 3/4" X 1/2"
111	1/2" X 3/4" X 1/2"	1/2" X 3/4" X 1/2"	1/2" X 3/4" X 1/2"
112	1/2" X 3/4" X 1/2"	1/2" X 3/4" X 1/2"	1/2" X 3/4" X 1/2"
113	1/2" X 3/4" X 1/2"	1/2" X 3/4" X 1/2"	1/2" X 3/4" X 1/2"
114	1/2" X 3/4" X 1/2"	1/2" X 3/4" X 1/2"	1/2" X 3/4" X 1/2"
115	1/2" X 3/4" X 1/2"	1/2" X 3/4" X 1/2"	1/2" X 3/4" X 1/2"
116	1/2" X 3/4" X 1/2"	1/2" X 3/4" X 1/2"	1/2" X 3/4" X 1/2"
117	1/2" X 3/4" X 1/2"	1/2" X 3/4" X 1/2"	1/2" X 3/4" X 1/2"
118	1/2" X 3/4" X 1/2"	1/2" X 3/4" X 1/2"	1/2" X 3/4" X 1/2"
119	1/2" X 3/4" X 1/2"	1/2" X 3/4" X 1/2"	1/2" X 3/4" X 1/2"
120	1/2" X 3/4" X 1/2"	1/2" X 3/4" X 1/2"	1/2" X 3/4" X 1/2"

FORUM
THE ART & SCIENCE OF BUILDING
800 WEST ENDICOTT AVENUE
ANNAPOLIS, MD 21403
TEL: 410-293-8800

7-ELEVEN STORE
4769 SHOREDRIVE
VIRGINIA BEACH, VA 23465
VERDAD REAL ESTATE CONSTRUCTION SERVICES
1500 WILSON ROAD
SUITE 100
VIRGINIA BEACH, VA 23462

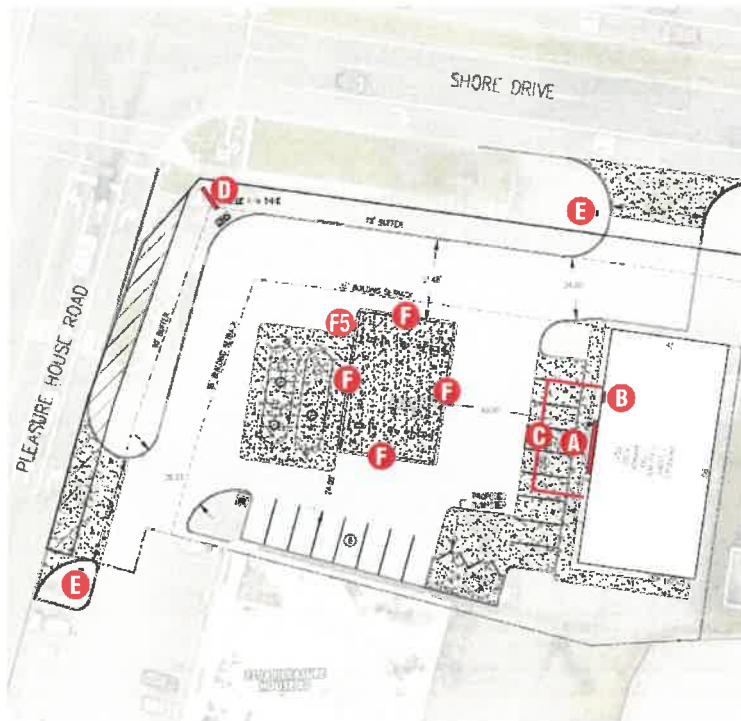
NOT FOR CONSTRUCTION

Architect: Forum
Project No.: 7450000
Project Name: 7-ELEVEN STORE
Project Location: 4769 SHOREDRIVE, VIRGINIA BEACH, VA 23465
Project Date: 06/27/2015

R0.02

SITE PLAN

NOTE: ONLY 3 SIGNS TOTAL PERMITTED INCLUDING 1 F/S



Site Plan
INTS

PRODUCT LIST		
SQ. FT.	QTY	ITEM
EXTERIOR BUILDING SIGNS		
A 52.5	1	3' x 19' TATEYAMA
INTERIOR SIGNS AND WINDOW VINYL		
B 3.2	1	ATM HANGING SIGN (INTERIOR)
C N/A	6	WINDOW VINYL
EXTERIOR GROUND SIGNS		
D 28.6	1	DF MONUMENT SIGN
E 2	2	DF DIRECTIONAL SIGNS
FUEL CANOPY FASCIA SIGNS & VINYL		
F5 9	1	5F CANOPY SIGNS (MAIN ID KEYSTONE)
F N/A	4	TRI-STRIPE VINYL SETS

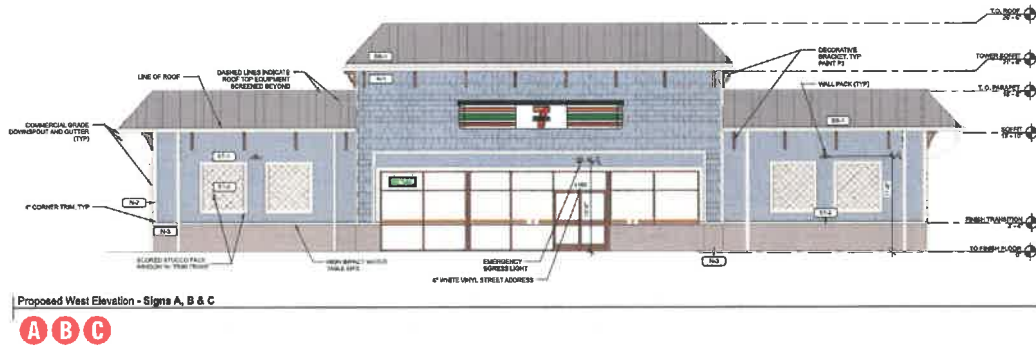
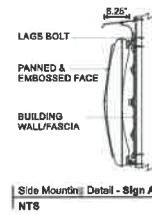
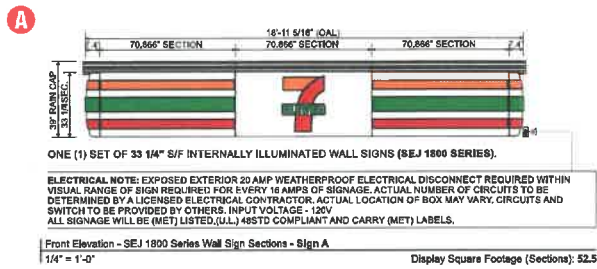


Job Location: 41801
4769 Shore Dr.,
Virginia Beach, VA 23455
Date: July 23, 2020



D-ORDER# 103328.00 JAJ
Project Mgr.: Victoria Cox
victoria.cox@cummingsigns.com
Page: 1 of 6

ELEVATION - WALL SIGNAGE

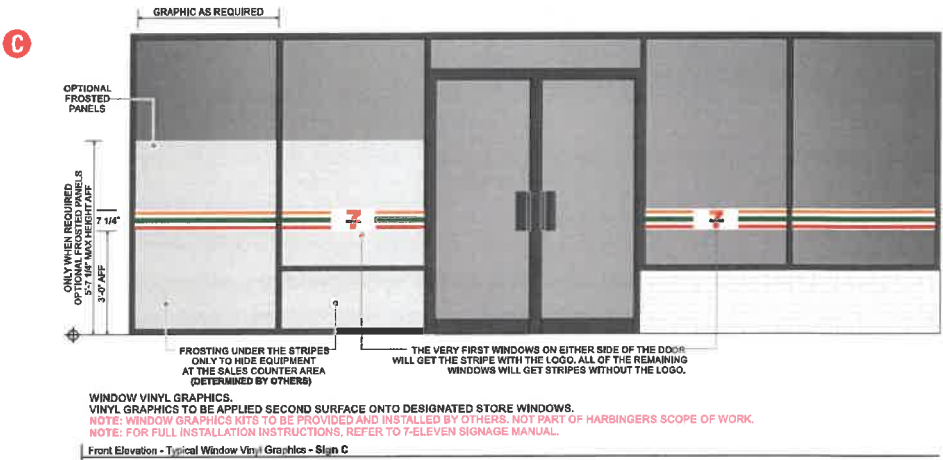
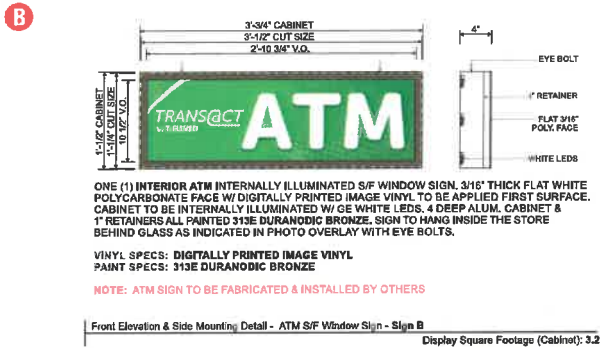


Job Location: 41801
4769 Shore Dr.,
Virginia Beach, VA 23455
Date: July 23, 2020



D-ORDER# 103328.00 JAJ
Project Mgr.: Victoria Cox
victoria.cox@cummingsigns.com
Page: 2 of 6

ATM/ WINDOW VINYL SIGNAGE



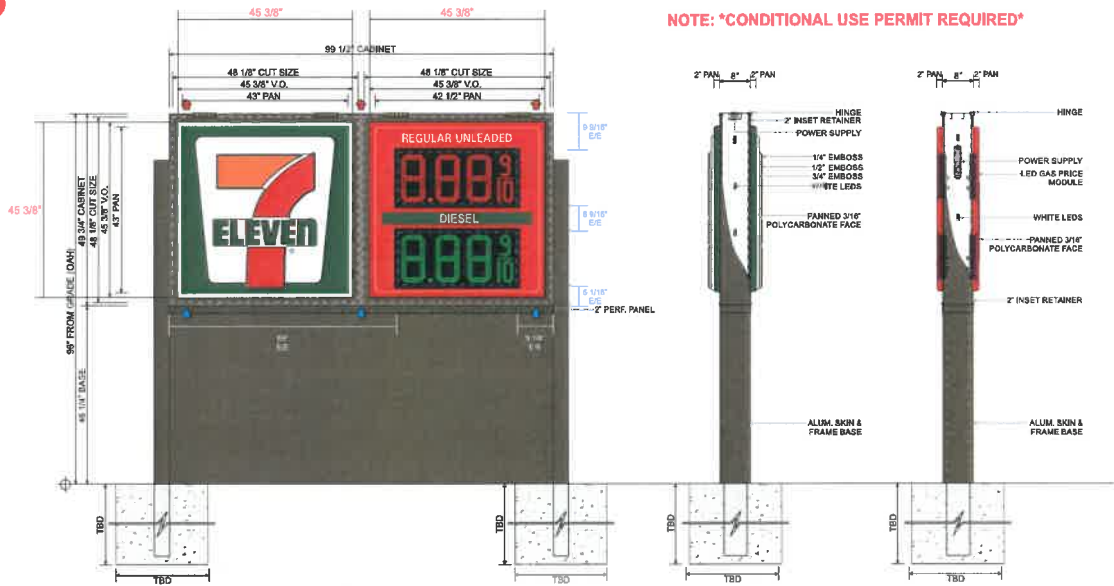
Job Location: 41801
4769 Shore Dr.,
Virginia Beach, VA 23455
Date: July 23, 2020



D-ORDER# 103328.00 JAJ
Project Mgr.: Victoria Cox
victoria.cox@cummingsigns.com
Page: 3 of 6

MONUMENT

D



NOTE: *CONDITIONAL USE PERMIT REQUIRED*

ONE (1) CUSTOM D/F INTERNALLY ILLUMINATED MAIN ID/GAS PRICE MONUMENT SIGN.

MAIN ID (M18) FACES W/ RETAINERS: 3/16" THICK PAN FORMED & EMBOSSED WHITE POLY. FACES W/ TRANSLUCENT VINYL GRAPHICS APPLIED FIRST SURFACE. 2" INSET RETAINERS TO BE HINGED ON BOTH SIDES OF CABINET.

GAS PRICE (L16G2D) FACES W/ RETAINERS: 3/16" THICK PAN FORMED CLEAR POLY. FACES BACK SPRAYED PMS 485 RED THEN PMS WHITE W/ 3M 3630-26 GREEN TRANSLUCENT VINYL & 3M 7725-12 BLACK VINYL TRIM AROUND LED WINDOW APPLIED SECOND SURFACE. 2" INSET RETAINERS TO BE HINGED ON BOTH SIDES OF CABINET.

8" DEEP EXTRUDED ALUM. CABINET W/ 2" INSET HINGED RETAINERS TO BE PAINTED DURANODIC BRONZE. CABINET TO BE INTERNALLY ILLUMINATED W/ WHITE LEADS.

PROVIDE CUSTOMER W/ PRICE VISION 12" DIGIT RED & GREEN LED MODULES.
PROVIDE CUSTOMER ALUM. SKIN & FRAME BASE, PAINTED DURANODIC BRONZE.

7-ELEVEN VINYL SPECS: 3M 3630-44 ORANGE, 3M 3630-33 RED, 3M 3630-26 GREEN, 3M 7725-12 BLACK
7-ELEVEN PAINT SPECS: PMS 485 RED & PMS WHITE

NOTE: VERTICAL STEEL SUPPORT & FOOTING TO BE SPECIFIED BY ENGINEERING & PROVIDED BY INSTALLER
NOTE: MONUMENT SIGN CABINET TO HAVE AT LEAST 1" OF SPACE BELOW CABINET FOR VENTILATION.

Face View & Side Detail - M16 & L16G2D Monument Sign - Sign Type D

SEPPRICE VISION LED UNITS	
7-ELEVEN LOGO DIMENSIONS: OAH: 39.5M" OAL: 36.1M"	LED UNIT SIZE: 14.284" X 51.3" LED CHARACTER SIZE: 12.340"

Display Square Footage (V.O.): 28.6

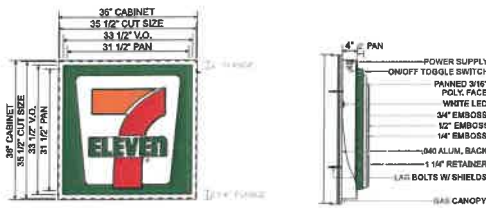
Job Location: 41801
4769 Shore Dr.,
Virginia Beach, VA 23455
Date: July 23, 2020



D-ORDER# 103328.00 JAJ
Project Mgr.: Victoria Cox
victoria.cox@cummingsigns.com
Page: 4 of 6

CANOPY SIGNAGE

F5



ONE (1) W9 8" P INTERNALLY ILLUMINATED CANOPY SIGN CABINET, 3/16" THICK PAN FORMED & EMBOSSED WHITE POLYCARBONATE FACE W/ TRANSLUCENT VINYL GRAPHICS APPLIED FIRST SURFACE, 4" DEEP EXTRUDED ALUM. CABINET W/ 1 1/4" RETAINERS TO BE PAINTED WHITE. CABINET TO BE INTERNALLY ILLUMINATED W/ WHITE LEDS.

VINYL SPECS: 3M 3630-44 ORANGE, 3M 3630-33 RED, 3M 3630-26 GREEN
 PAINT SPECS: PMS WHITE

NOTE: SIGN TO BE INSTALLED 2'-0" FROM LEFT EDGE OF GAS CANOPY.
 NOTE: ACCOMPANYING TRI-STRIPE GRAPHICS TO BEGIN 2'-0" FROM CABINET.
 NOTE: TRI-STRIPE GRAPHICS TO BE SUPPLIED BY 7-ELEVEN CANOPY CONTRACTOR.

7-ELEVEN LOGO
 DIMENSION:
 OAH: 29 1/2"
 DAL: 27"

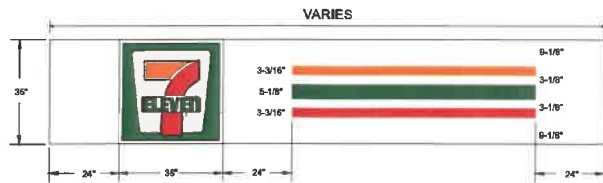
Face & Side Detail - W9 Canopy Sign Cabinet - Sign E

1/2" = 1'-0"

Display Square Footage (Cabinet): 9.0

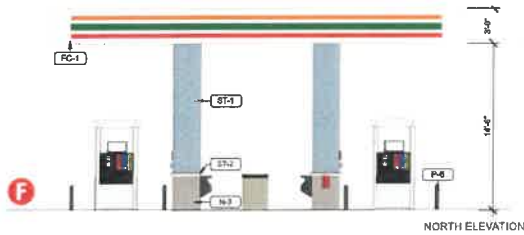
F5

F



Front Elevation - 36" Canopy Height - Sign Layout - Sign E

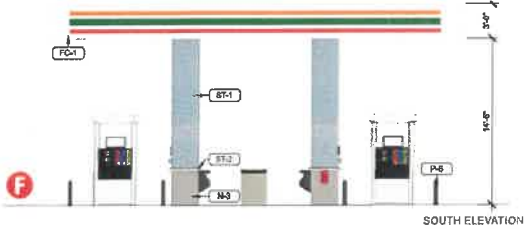
3/8" = 1'-0"



NORTH ELEVATION



WEST ELEVATION: 9.0 SQ. FT.



SOUTH ELEVATION



EAST ELEVATION

Canopy Overlay - Sign Type E

1/8" = 1'-0"

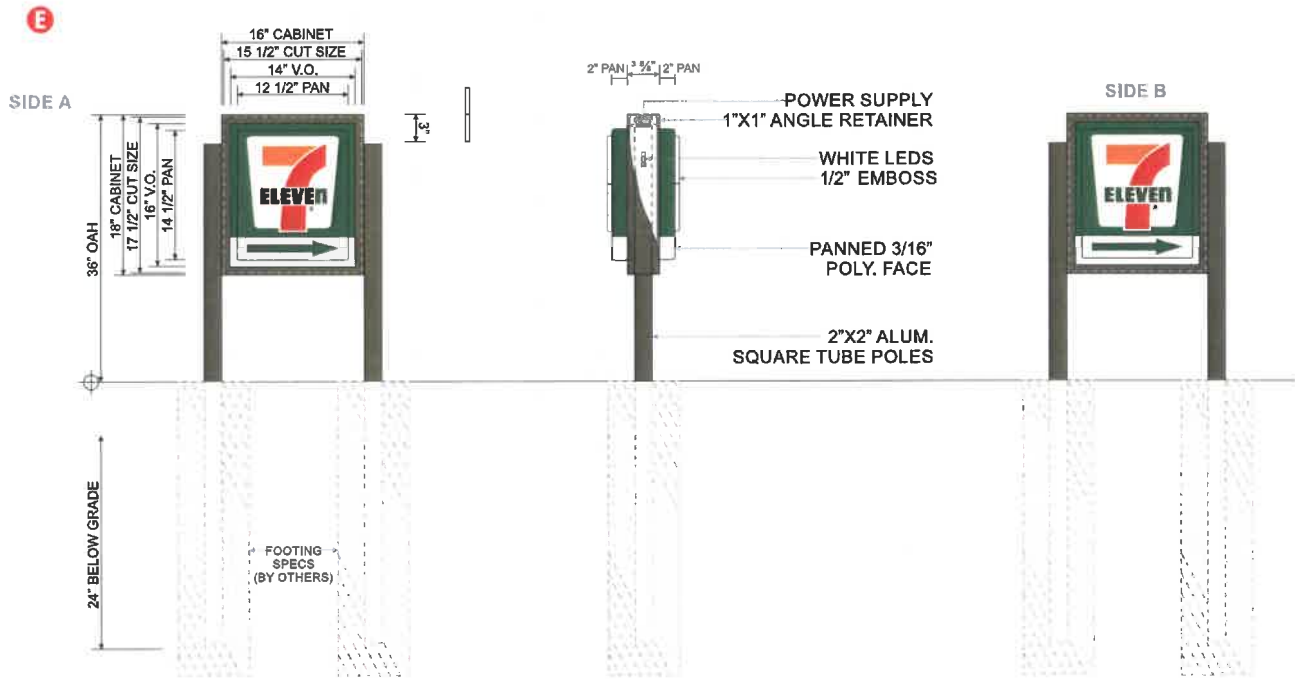
Job Location: 41801
 4769 Shore Dr.,
 Virginia Beach, VA 23455
 Date: July 23, 2020



CUMMINGS

D-ORDER# 103328.00 JAJ
 Project Mgr.: Victoria Cox
 victoria.cox@cummingsigns.com
 Page: 5 of 6

DIRECTIONAL



TWO (2) CUSTOM D/F INTERNALLY ILLUMINATED DIRECTIONAL SIGN CABINETS.
 3/16" THICK PAN FORMED & EMBOSSED WHITE POLYCARBONATE FACES W/ TRANSLUCENT VINYL GRAPHICS APPLIED
 FIRST SURFACE. 3 5/8" DEEP EXTRUDED ALUM. CABINET W/ 1" RETAINERS TO BE PAINTED DURANODIC BRONZE.
 CABINET TO BE INTERNALLY ILLUMINATED W/ WHITE LEDS.

7-ELEVEN VINYL SPECS: 3M 3630-44 ORANGE, 3M 3630-33 RED, 3M 3630-26 GREEN

NOTE: ARROWS TO ALWAYS BE FACING TOWARDS STORE.

Front Elevation & Side Detail - Custom D/F Directional Sign Cabinet - Sign Type F
 3/4" = 1'-0"

Plastic: Custom
 Display Square Footage: 2.0 Each

Job Location: 41801
 4769 Shore Dr.,
 Virginia Beach, VA 23455
 Date: July 23, 2020



D-ORDER# 103328.00 JAJ
 Project Mgr.: Victoria Cox
 victoria.cox@cummingsigns.com
 Page: 6 of 6